



# NEW PRODUCT

**IN STOCK AND AVAILABLE TODAY!**

## SUPER SHROUD, EARLY STYLE NON-DOGHOUSE

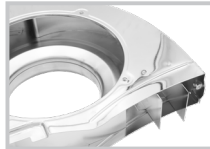


**36 HP Style, Black**  
**00-8679-0**



UPC: 707924575699

**36 HP Style, Chrome**  
**00-8831-0**



UPC: 707924583281

**36 HP Style w/Fresh Air Heat Duct, Black**  
**00-8684-0**



UPC: 707924575675

**36 HP Style w/Fresh Air Heat Duct, Chrome**  
**00-8832-0**



UPC: 707924583298



- EMPI Engineers have done it again! Extensive development, CAD modeling, 3D scanning, and exhaustive real-world flow testing have yielded a proprietary EMPI fan shroud that cools more effectively, directs air more efficiently, and fits better than ever before.
- These early style Super Shrouds deliver more air volume for increased cooling capacity. Internal fin shapes and placements were optimized using Computational Fluid Dynamics (CFD) software and empirical flow bench testing. 3D scans of multiple engine cases and tins were used to ensure the best fitment possible. Plus, the Super Shroud can accommodate your choice of stock (28-30mm) or thicker (37mm) fans.
- The EMPI Super Shroud features multiple elements that have been completely redesigned for a cleaner, OE Style look while delivering improved engine performance and longevity when compared to OEM shrouds including:

Added Velocity Stack Inlet, mimicking the Porsche 356 OEM shroud, to increase airflow into the shroud and deliver more cooling efficiency.

Enhanced air balance across the engine. OE-style and existing aftermarket shrouds are typically imbalanced, favoring the passenger side (1 & 2 cylinders) versus the driver side (3 & 4 cylinders). This imbalance can lead to inconsistent heating between the sides of the motor. The EMPI Super Shroud corrects the imbalance while still delivering increased airflow across both sides of the engine.

Extended cooling fin tips to simulate the OEM thermostat vanes; while many OEM thermostats have been deleted or no longer function properly, EMPI engineers extended these tips to replicate thermostat functionality in the "on" position.

Improved fan shroud fitment on OEM and bubbletop engine cases for easier installation and a better seal to the engine tin when compared to previous EMPI shrouds.

Horizontal alignment of the alternator bolt holes and removal of unnecessary holes makes for a better-looking shroud that contains the airflow more completely.

- Extensive testing confirms that the EMPI Super Shroud delivers:
  - 7% more total air flow than previous EMPI non-doghouse shrouds (w/either fan)
  - 14% more cooling air output than OE Style Shroud (w/30mm fan)
  - 37% more cooling air CFM (cubic feet per minute) output than OE Style Shroud (w/37mm fan)
  - 42% more engine cooling capacity when using a remote oil cooler and 37mm fan versus OE-style oil cooler in an OE-style shroud
- Super shrouds are available in semi-gloss black paint or chrome finish with optional heater ducts.
- Want to guarantee your next engine build runs cooler, longer and performs better? Install an EMPI Super Shroud today!
- Doghouse Super Shrouds coming soon!

**See All Versions!**



07/29/2025

