

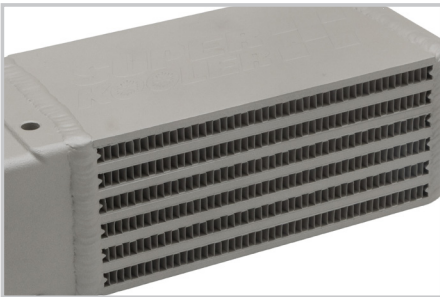
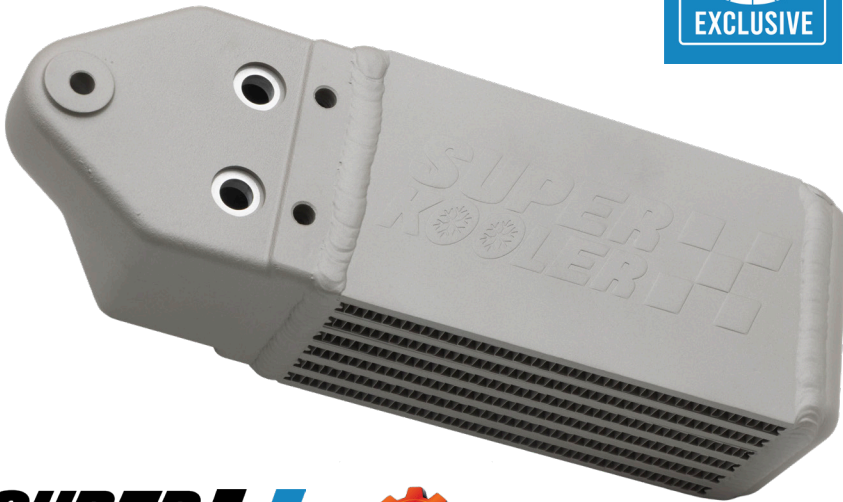


# NEW PRODUCT

**IN STOCK AND AVAILABLE TODAY!**

## EMPI SUPER KOOLER HIGH-PERFORMANCE ALUMINUM DOGHOUSE OIL COOLER

**98-1189-B**



- EMPI has collaborated with high-performance cooling experts CSF Radiators to deliver another EMPI Exclusive! The new Super Cooler sets the benchmark in air-cooled performance and protection for your Type 4, Type 3 and Type 1/Type 2 Doghouse engine applications.
- Extensive testing revealed significant performance improvements when compared to the OE unit. The state-of-the-art core design allows for improved flow and oil cooling efficiency.
- High quality construction accommodates increased oil pressure without leaking.
- The Super Cooler is finished with a Cerakote high-performance ceramic-based coating that provides an extremely thin, lightweight layer that protects against extreme heat.
- This EMPI Exclusive "Super Cooler" offers best-in-class features and capabilities including:
  - Billet CNC machined top and a bespoke cast bottom end caps
  - Thermal Rejection Ceramic Coating for Improved Heat Dissipation
  - State of the Art Bar/Plate Core Delivers 10% More Cooling Volume Versus OE Tube/Fin Construction
  - 47% Colder Oil Cooler Outlet Temperature than the OE Oil Cooler when Tested in Equivalent Conditions
  - Pair with The Super Shroud Fan Shroud for 86% Colder Oil Cooler Outlet Temperature than the OE Oil Cooling System
  - Performs 5% Better than the Larger Type 4 Oil Cooler when Tested in Equivalent Conditions
  - Multi-fit for Type 1 VW Bug and Type 3 variants
  - Installation Hardware and Elring brand oil seals/gaskets included
  - Pressure tested to 120psi (~8.3bar)
  - Built in M10x1.0 bung (like the OE Type 3 oil cooler) and can be used for additional oil temperature or pressure sensors
  - Engraved EMPI Logo, Embossed SuperKooler Logo
  - Manufactured exclusively by CSF Cooling for EMPI
  - Includes hardware kit and bespoke "Hoover bit" for a comprehensive installation
- Applications include:
  - Type 1 bug/buggy: 1949-1970 - with correct fan shroud, tin, and adapter
  - Type 1 bug/buggy: 1971-1979 - Direct replacement
  - Type 2 bus: 1950-1971 - with correct fan shroud, tin, and adapter
  - Type 3: 1961-1973 - Direct replacement
  - Also fits Type 4 motors
  - OE Reference 113 117 021

OE Reference #: 113 117 021  
 UPC: 707924589887  
 Dimensions (in): 12.75L x 6W x 8H  
 Weight (lbs): 4.1

**See Product Page!**

05/06/2026



MASTER DISTRIBUTOR OF THE AMERICAS  
JUPITER • DANBUR • SDI